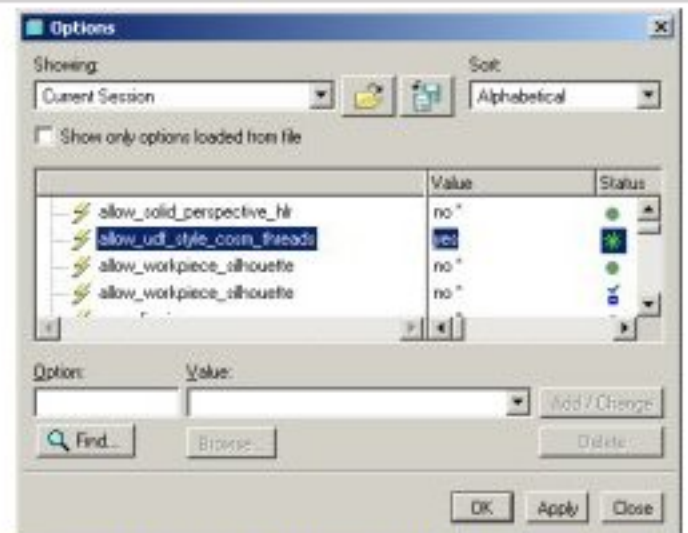
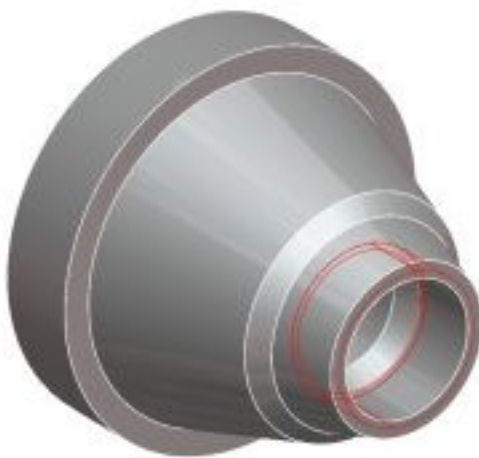


This Tips&Tricks chapter introduces the way users should follow to obtain NPTF threads within Cosmetic > Thread tool

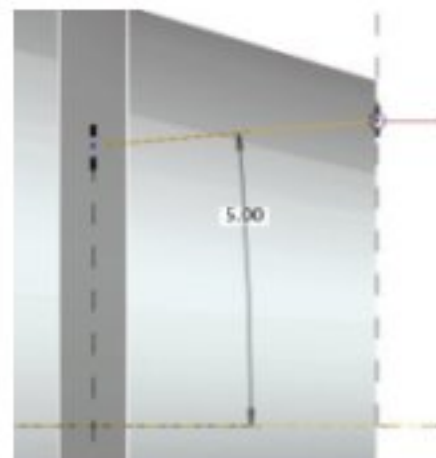
By default Cosmetic > Thread tool generates surface which finally is used by Pro/E while creating thread "lines" in drawing mode.



However the shape of this surface can be changed. Unfortunately it demands the changes in Pro/Engineer configs - Tools > Options set "Allow\_udf\_style\_cosm\_threads" to Yes!

When this is done create thread by Insert > Cosmetic > thread - Pro/E will display the window with two folders. Depending on what is demanded: outer or inner thread, choose respectively.

+	Revolve 1	8
+	Revolve 2	9
	Hole 1	10
	Intersect 1	11
+	Pattern 1 of Rib	12
+	Revolve 3	19
	Cosmetic id 108	20
-	Group THRU	21
+	Revolve 4	22
	Insert 1	



Next please accept "Same dims"(by default units are inches), input diameter, indicate thread surfaces and then start surface. So far there is nothing new, but take a look in to Model Tree. Pro/E created a group of features where thread surface is stored as Revolve. Change the profile of Revolve to obtain desired shape of thread surface!